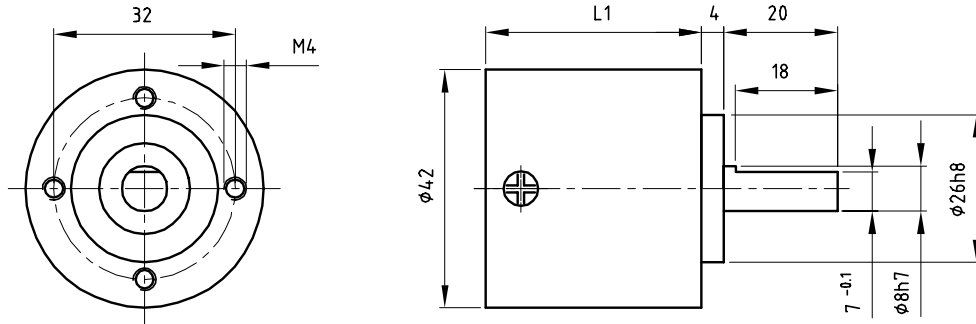


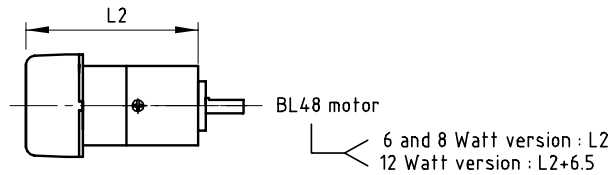
Dimensional drawing



Gearbox data

Gearbox Order number	Ratio	Exact ratio	Number of stages	Efficiency [%]	Maximum torque continuous [Nm]	Direction of rotation w.r.t. motor	Weight [g]	L1 [mm]	L2 [mm]
P42A0005AA	5:1	5:1	1	90	2	≠	165	38	91.0
P42A0013AA	13:1	13:1	1	90	2	≠	165	38	91.0
P42A0025AA	25:1	25.2:1	2	81	12	=	270	60.5	113.5
P42A0053AA	53:1	53:1	2	81	12	=	270	60.5	113.5
P42A0099AA	99:1	98.6:1	2	81	12	=	270	60.5	113.5
P42A0180AA	180:1	180.2:1	2	81	12	=	270	60.5	113.5

Product combinations



Order number of motor/gearbox :  
Last 6 digits of motor number + gearbox number

General data

* Bearings on output shaft	ball	
* Maximum radial load 16 mm from mounting face	110	N
* Maximum axial load	4.0	N
* Max. recommended input speed	8000	rpm
* Max. backlash at nominal load	1	°
* Temperature range	-20/+80	°C

Options

- \* Other standard ratios
- \* Special shafts
- \* Lower backlash version